

# Canine GDF15 Protein

Cat. No. GDF-DE115

## Description

<b>Source</b>	Recombinant Canine GDF15 Protein is expressed from E.coli with His tag at the N-Terminus. It contains Ala197-Val307.
<b>Accession</b>	A0A8C0TNP6
<b>Molecular Weight</b>	The protein has a predicted MW of 13.12 kDa. The protein migrates to 15-20 kDa under reduced (R) condition and 23-26 kDa under Non reducing (N) condition based on Bis-Tris PAGE result.
<b>Endotoxin</b>	Less than 1EU per µg by the LAL method.
<b>Purity</b>	> 95% as determined by Bis-Tris PAGE

## Formulation and Storage

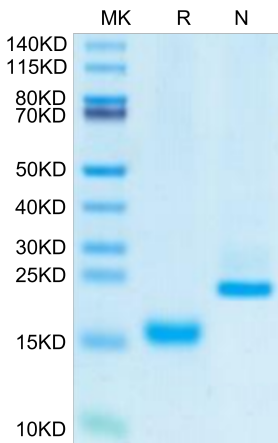
<b>Formulation</b>	Lyophilized from 0.22µm filtered solution in 50mM HAc (pH 2.9). Normally 8% trehalose is added as protectant before lyophilization.
<b>Reconstitution</b>	Centrifuge the tube before opening. Reconstituting to a concentration more than 100 µg/ml is recommended. Dissolve the lyophilized protein in 50mM HAc (pH 2.9).
<b>Storage</b>	-20 to -80°C for 12 months as supplied from date of receipt. -80°C for 3 months after reconstitution. Recommend to aliquot the protein into smaller quantities for optimal storage. Please minimize freeze-thaw cycles.

## Background

Growth Differentiation Factor 15 (GDF15), also known as NSAID activated gene-1 (NAG-1), is associated with a large number of biological processes and diseases, including cancer and obesity. GDF15 is synthesized as pro-GDF15, is dimerized, and is cleaved and secreted into the circulation as a mature dimer GDF15.

## Assay Data

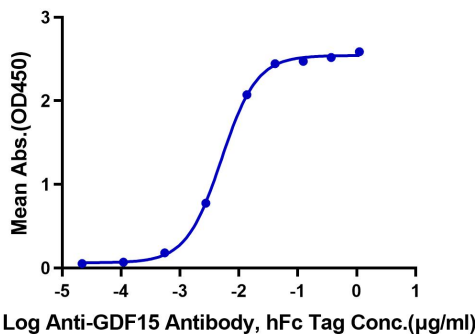
### Bis-Tris PAGE



Canine GDF15 on Bis-Tris PAGE under reduced (R) condition and Non reducing (N) condition. The purity is greater than 95%.

### ELISA Data

**Canine GDF15, His Tag ELISA**  
0.1µg Canine GDF15, His Tag Per Well



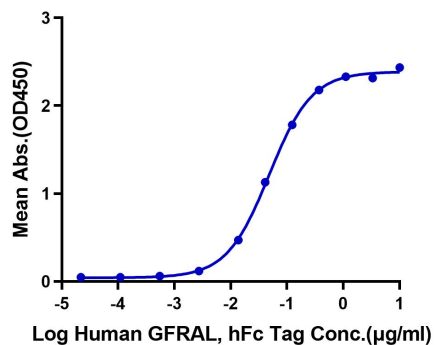
Immobilized Canine GDF15, His Tag at 1µg/ml (100µl/Well) on the plate. Dose response curve for Anti-GDF15 Antibody, hFc Tag with the EC50 of 5.1ng/ml determined by ELISA (QC Test).

Assay Data

ELISA Data

Canine GDF15, His Tag ELISA

0.1µg Canine GDF15, His Tag Per Well



Immobilized Canine GDF15, His Tag at 1µg/ml (100µl/Well) on the plate. Dose response curve for Human GFRAL, hFc Tag with the EC50 of 48.3ng/ml determined by ELISA.